

ITEM 32. PARKING – NO PARKING – VINE GROVE DARLINGTON

TRIM RECORD NO: 2017/296368

RECOMMENDATION

It is recommended that the Committee endorse the allocation of parking on both sides of Vine Grove, Darlington between the points 34 metres and 44 metres (one car space) east of Shepherd Lane, as “No Parking”.

VOTING MEMBERS FOR THIS ITEM

<i>Voting Members</i>	<i>Support</i>	<i>Object</i>
City of Sydney		
Roads and Maritime Services		
NSW Police – Redfern LAC		
Representative for the Member for Newtown		

DECISION

BACKGROUND

The City has received a request from the *University Technology of Sydney Housing Service*, 12 Boundary Street, Darlington to provide a “No Parking” restriction at the eastern dead-end of Vine Grove, as parked cars are obstructing the rear door access to their property.

COMMENTS

The majority of kerb space in Vine Grove, Darlington is currently ‘No Parking’ with one unrestricted space at the eastern end of the street.

The eastern end of Vine Grove is a dead-end and the road carriageway is approximately 3.4 metres wide with no existing footpaths. The dead-end of Vine Grove provides rear access for residents of 12 Boundary Street and when a car is parked at the dead-end it blocks access to the property.

The NSW Road Rules prohibit drivers from parking in a way that obstructs access to properties at any time.

On-site inspection shows there is a need to signpost the existing unrestricted area at the dead-end of Vine Grove as “No Parking” to improve access along the lane.

CONSULTATION

The City notified local residents and businesses in the area. There were 82 letters sent out with no responses supporting the proposal and one response opposing the proposal.

The response opposing the proposal believed the unrestricted space can be used for parking and still maintain access to the properties.

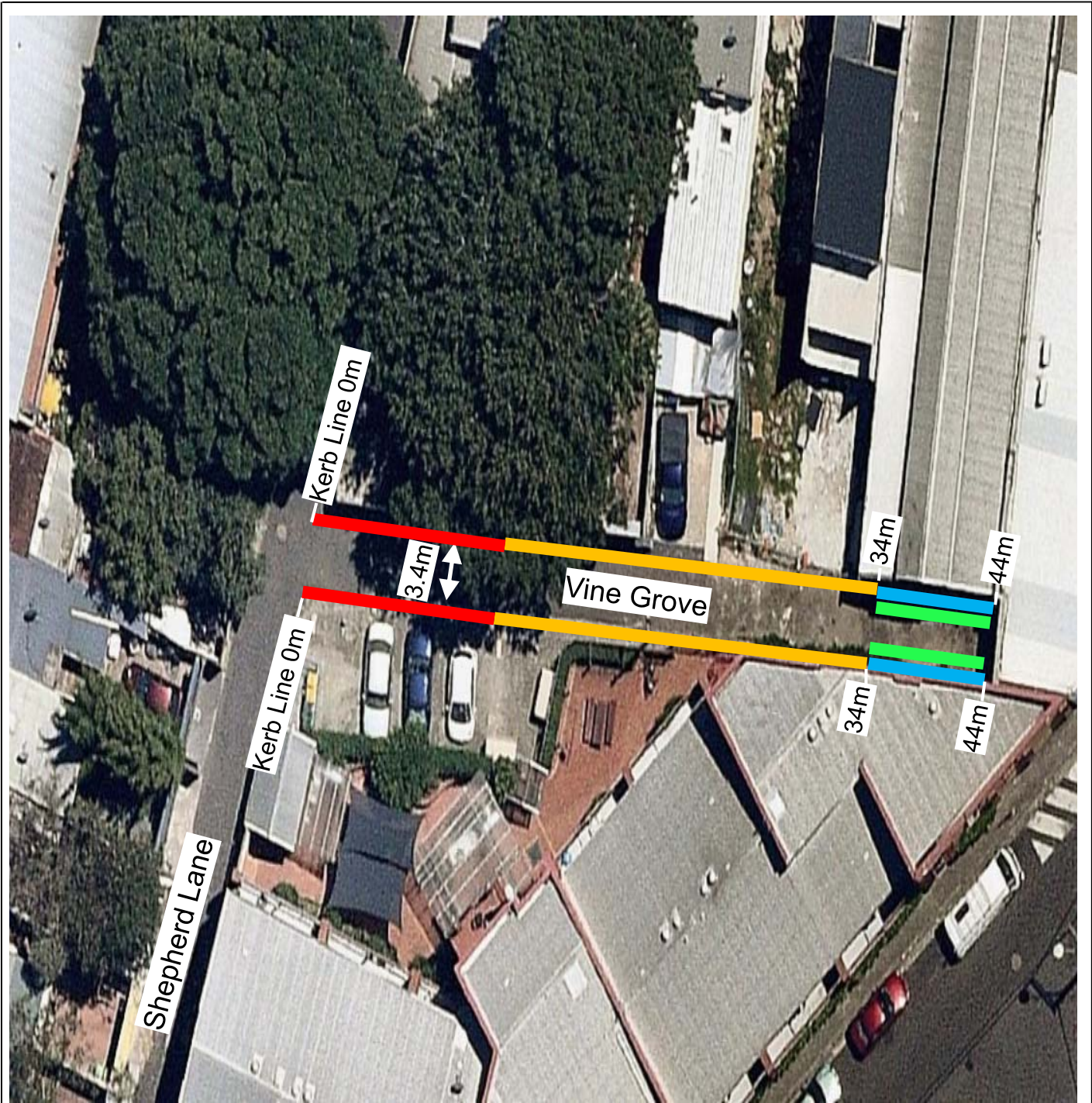
FINANCIAL





Funds are available in the current budget.

ATTACHMENTS

Parking – No Parking – Vine Grove Darlington

James Nguyen, Engineering Traffic Officer



	No Stopping (Existing)	
	No Parking (Existing)	 No Parking (Proposed)
	Unrestricted Parking (Existing)	

Source: Nearmap -- Tuesday 17 January 2017

PROPOSAL

PROPOSED NO PARKING
 VINE GROVE, EAST OF SHEPHERD LANE
 DARLINGTON



